



Milk Bar® Vitality Calf Bottle System



Fitting the Vitality Bottle Cap

1. For each new calf, fit a new Milk Bar Teat to the Teat Clip.
2. Snap the Teat Clip into the Vitality Bottle Cap.
3. Screw the Vitality Bottle Cap to bottle.
4. Drop the bottle into the chute, self-aligning as it drops in place. If the bottle is sitting back in the chute, the calf will pull it forward while nursing, locking it into place.



Cleaning the Vitality Bottle

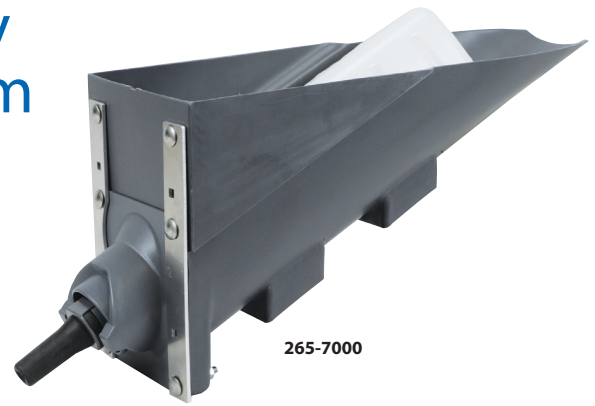
1. Unscrew the cap from bottle.
2. Put the complete cap unit in warm water and alkali detergent. There is no need to take cap parts apart!
3. Wash bottle as you normally would.
4. Discard the teats when calves are weaned.

Vitality Pen Tags and Clips

Milk Bar Vitality Pen Tags and Clips encourage Milk Bar's Golden Rule: One Calf – One Teat. Teats used for more than one calf cycle soften and allow calves to drink too quickly. The Tags and Clips come in ten different colors and are used as a visual aid to remind producers when teats were started and what specific teats are in that group. Hang the tag on the pen and the clip stays with the teat until the calf is weaned.

265-7003-00 Milk Bar Vitality Pen Tags and Clips Color Variety (Pk/10), 1 of each clip and tag color. Wt. 0.25 lb.

265-7003* Milk Bar Vitality Pen Tags and Clips – (Pk/5).



265-7000

Calves that drink one quart of milk in under two minutes have decreased lactose absorption compared to those who meet the two-minute mark. The decreased lactose absorption negatively impacts daily weight gain and increases the risk of nutritional diarrhea as lactose passes through the intestines too quickly. Calves that nurse too quickly also cross-suckle, causing navel and teat damage to pen mates. It is important that calves suckle hard from birth to weaning to ensure they drink at the slow speed required for full milk curding and lactose absorption. For optimum health, calves should start drinking from a new Milk Bar Teat and stay with that teat, or a similarly aged teat, until weaning. As teats age they soften, increasing milk flow.

The Milk Bar Vitality Bottle System is incredibly easy to install and cuts time spent raising calves. The Milk Bar Vitality System uses a unique chute design that ensures the Milk Bar Teat is positioned vertically so the calf suckles at the correct speed for healthy digestion.

265-7000 Milk Bar Vitality System Complete. System includes alignment chute, holders and bolts, three quart bottle, screw on top, clip, five Milk Bar 265-0002 Teats. Sold as packs of five.

265-7001 Milk Bar Vitality System Complete. System includes alignment chute, holders and bolts, screw on top, clip, five Milk Bar 265-0002 Teats. Sold as packs of five and calf bottles are sold separately.

265-7002 Screw-On Top for Milk Bar Vitality System.

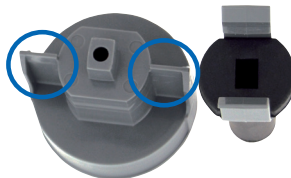
265-7003 Grey Teat Clip for Milk Bar Vitality System.

265-0002 Milk Bar Teat for calves. Pk/ 10.

265-0001 Milk Bar Colostrum Teat for calves. Pk/ 5.

999 3-Quart Screw-Top Bottle Only.

913B 2-Quart Screw-Top Bottle Only.



Teat and screw on cap are easily assembled using plastic connector clip. Cap self-aligns in chute using tabs, circled, ensuring teat is the correct direction for proper flow.



265-7000



The Coburn Company, Inc. • P O Box 147 • Whitewater, WI 53190 U.S.A.

800 776 7042

262 473 2822

coburn.com

info@coburn.com



**FREE!
Calf-Raising
Booklet**

265-5000
Milk Bar Booklet
"Raising Healthy
Calves the Easy
Way"



Calf Feeders

- Milk Bar® Calf Feeders feature the patented Milk Bar® nipple which promotes slow nursing for best calf health.
- Maximizes salivation which promotes enzymes and natural antibiotics for good digestion and healthy immunities.
- Cuts down on guzzling and choking which ensures milk enters the abomasum, not the rumen, where scours can result.
- Milk Bar® nursing allows calves to be raised in groups saving in labor costs while raising socialized, contented calves.

Milk Bar® Feeders with EZ-Lock



Milk Bar Feeders are fitted with Milk Bar Teats for great calf health and feature fully adjustable, bump proof EZ-Lock Brackets or Fixed Metal Brackets. Feeders are easy to clean, handle and are very durable. Milk Bar Feeders also stack together with teats fitted for easy and convenient portability and storage.

- 265-2101 EZ-Lock Milk Bar 1, 3 quart capacity, reversible brackets. Wt. 4 lbs.
- 265-2106 EZ-Lock Milk Bar 6, 9 gallon capacity. Wt. 7 lbs.
- 265-2110 EZ-Lock Milk Bar 10, 15 gallon capacity. Wt. 12 lbs.
- 265-2112 Milk Bar 12 with fixed metal brackets, 18 gallon capacity. Wt. 14 lbs.

Milk Bar® Compartment Feeders



Milk Bar Compartment Feeders is the way to feed a group of calves and know that each is getting the proper amount. Compartment feeders are useful for transitioning calves from individual pens or acclimating new calves purchased from a raiser. Each compartment holds 2.5 quarts.

- 265-2202 EZ-Lock Compartment Milk Bar 2. Wt. 4.5 lbs.
- 265-2203 EZ-Lock Compartment Milk Bar 3. Wt. 6.5 lbs.
- 265-2204 EZ-Lock Compartment Milk Bar 4. Wt. 7 lbs.
- 265-2205 EZ-Lock Compartment Milk Bar 5. Wt. 10 lbs.
- 265-2210 Compartment Milk Bar 10 with fixed metal brackets. Wt. 18 lbs.

Milk Bar® Molded-In Brackets Feeders

Molded-in fence bracket and hook feeders easily hook onto wire, one-by-four wood rail, and cattle panels.

- 265-2001 Milk Bar 1. Holds 3 quarts. Wt. 1.5 lbs.
- 265-2005 Milk Bar 5. Four gallon capacity. Wt. 6 lbs.



Milk Bar® Calf Teats & Plug



Colostrum
Calf Teat
265-0001



Calf Teat
265-0002



Round Hole
Calf Teat
265-0003



Teat Plug
265-1005

- 265-0001 Milk Bar Colostrum Teat for calves. Pk/ 5.
- 265-0002 Milk Bar Teat for calves. Pk/ 10.
- 265-0003 Milk Bar Teat with Round Hole for calves. Pk/10.
- 265-1005 Milk Bar Teat Plug. Pk/ 10.



The Coburn Company, Inc. • P O Box 147 • Whitewater, WI 53190 U.S.A.

800 776 7042

262 473 2822

coburn.com

info@coburn.com